

# ASHGHAL

## Interim Advice Note No. 018

### Kerb Inlet Gullies

### Revision No. A1

EXW-GENL-0000-PE-KBR-IP-00018

**Summary**

This Interim Advice Note (IAN) provides information and guidance on the implementation of kerb inlet gullies on Ashghal Projects. This IAN takes immediate effect and shall be used as interim guidance unless instructed otherwise by Ashghal.

This document supersedes IAN 018 Rev 0 dated June 2012. Third parties not working on Ashghal projects make use of this document at their own risk. Paper copies of this document are uncontrolled. Refer to Ashghal’s website for the most recent version.

INTERIM ADVICE FOR PWA PROJECTS ONLY



Rev	Date	Reason For Issue	Auth	Chk	App
A1	Sept 2013	Issued for All Relevant Infrastructure Projects	DL	AM	AA
0	June 2012	Issued for Expressway Projects	JM	FF	MG

## Contents

1. Foreword .....	3
2. Ashghal Interim Advice Note (IAN) – Feedback Form.....	4
3. Introduction.....	5
4. Withdrawn / Amended Standard .....	5
5. Implementation .....	5
Appendix A: Detail for D400 Kerb Inlet Gully for 125mm and 150mm Kerb Upstands.....	6

**INTERIM ADVICE FOR PWA PROJECTS ONLY**

## 1. Foreword

- 1.1 Interim Advice Notes (IAN) may be issued by Ashghal from time to time. They define specific requirements for works on Ashghal projects only, subject to any specific implementation instructions contained within each IAN.
- 1.2 Whilst IANs shall be read in conjunction with the Qatar Highway Design Manual (QHDM), the Qatar Traffic Manual (QTM) and the Qatar Construction Specifications (QCS), and may incorporate amendments or additions to these documents, they are not official updates to the QHDM, QTM, QCS or any other standards.
- 1.3 Ashghal directs which IANs shall be applied to its projects on a case by case basis. Where it is agreed that the guidance contained within a particular IAN is not to be incorporated on a particular project (e.g. physical constraints make implementation prohibitive in terms of land use, cost impact or time delay), a departure from standard shall be applied for by the relevant Consultant / Contractor.
- 1.4 IANs are generally based on international standards and industry best practice and may include modifications to such standards in order to suit Qatar conditions. Their purpose is to fill gaps in existing Qatar standards where relevant guidance is missing and/or provide higher standards in line with current, international best practice.
- 1.5 The IANs specify Ashghal's requirements in the interim until such time as the current Qatar standards (such as QHDM, QTM, etc.) are updated. These requirements may be incorporated into future updates of the QHDM, QTM or QCS, however this cannot be guaranteed. Therefore, third parties who are not engaged on Ashghal projects make use of Ashghal IANs at their own risk.
- 1.6 All IANs are owned, controlled and updated as necessary by Ashghal. All technical queries relating to IANs should be directed to Ashghal's Manager of the Design Department, Infrastructure Affairs.

Signed on behalf of Design Department:

---

**Abdulla Ahin A A Mohd**

**Acting Manager of Roads & Drainage Networks Design**

Design Management (Roads Section)  
Public Works Authority



قطر تستحق الأفضل  
Qatar Deserves The Best

Tel: 44950653  
Fax: 44950666  
P.O.Box 22188 Doha - Qatar  
Email: [aahin@ashghal.gov.qa](mailto:aahin@ashghal.gov.qa)  
<http://www.ashghal.gov.qa>

## 2. Ashghal Interim Advice Note (IAN) – Feedback Form

Ashghal IANs represent the product of consideration of international standards and best practice against what would work most appropriately for Qatar. However, it is possible that not all issues have been considered, or that there are errors or inconsistencies in an IAN.

If you identify any such issues, it would be appreciated if you could let us know so that amendments can be incorporated into the next revision. Similarly, we would be pleased to receive any general comments you may wish to make. Please use the form below for noting any items that you wish to raise.

Please complete all fields necessary to identify the relevant item			
IAN title:			
IAN number:		Appendix letter:	
Page number:		Table number:	
Paragraph number:		Figure number:	
Description comment:			
Please continue on a separate sheet if required:			
Your name and contact details (optional):			
Name:		Telephone:	
Organisation:		Email:	
Position:		Address:	

Please email the completed form to:

<p><b>Abdulla Ahin AA Mohd</b></p> <p>Acting Manager of Roads and Drainage Networks Design                  Design Management                  (Roads Section)                  Public Works Authority</p> <p><a href="mailto:aahin@ashghal.gov.qa">aahin@ashghal.gov.qa</a></p>
--

We cannot acknowledge every response, but we thank you for contributions. Those contributions which bring new issues to our attention will ensure that the IANs will continue to assist in improving quality on Ashghal's infrastructure projects.

### 3. Introduction

- 3.1 This Interim Advice Note (IAN), which takes immediate effect, outlines the requirements for the implementation of kerb inlet gullies.
- 3.2 Kerb inlet gullies shall be used instead of top inlet gullies except where it is not feasible, to the approval of Ashghal Drainage Design Department. A detail for a D400 kerb inlet gully for 125mm and 150mm kerb upstands is provided in Appendix A. This detail shall be used in all instances unless instructed otherwise by Ashghal or its designated Programme Management Consultant (PMC).

### 4. Withdrawn / Amended Standard

- 4.1 Not applicable.

### 5. Implementation

- 5.1 This IAN is to be used with immediate effect on projects as follows:
- All Ashghal projects in Design Stage.
- 5.3 The only exceptions are:
- Projects where the drainage design has been already finalised and accepted by Ashghal Drainage Design Department as at the date of issue of this IAN.
- 5.4 If in doubt, Consultants / Contractors should seek guidance from the respective Ashghal Project Manager or designated PMC on a scheme specific basis.

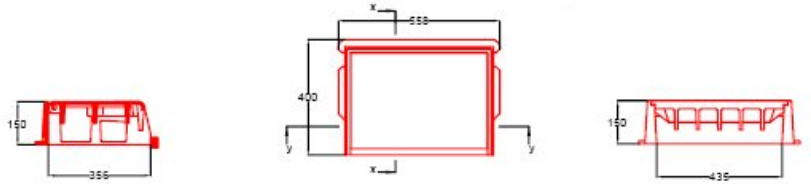
**INTERIM ADVICE FOR PWA PROJECTS ONLY**

**Appendix A: Detail for D400 Kerb Inlet Gully for 125mm and  
150mm Kerb Upstands**

**INTERIM ADVICE FOR PWA PROJECTS ONLY**

**Kerb Inlet Gully D400 : Waterway 468mm<sup>2</sup>  
for 125mm and 150mm kerb upstand**

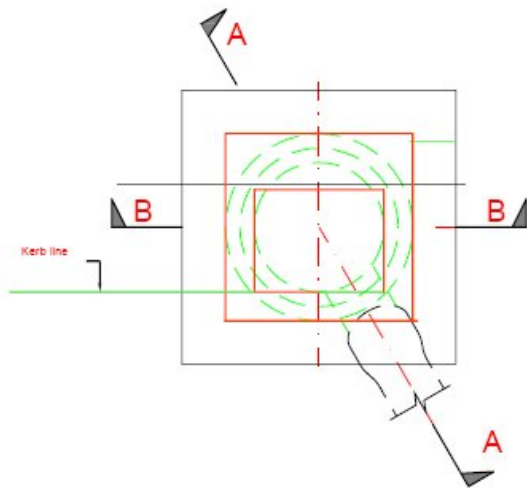
- Notes  
 1. Gully spacing to be appropriate for the reduced waterway for the side entry gully..  
 2. Engineering brick for bedding of gully frames to be in accordance with Section 20 Clause 6.4.2.5 of QCB 2010



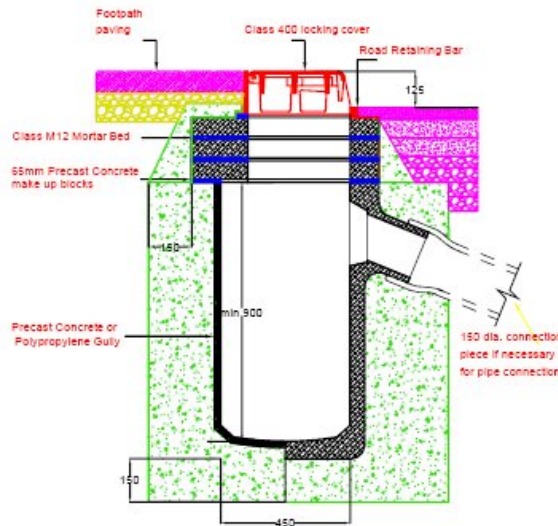
Section x - x

Plan on Gully Grate

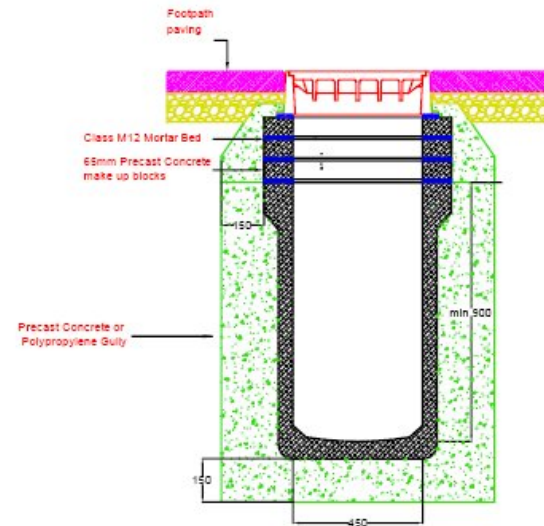
Section y - y



Plan on Gully



Section A - A



Section B - B